

# News Release

September 13, 2022



Contact: Sekiyama Tadashi

[info@eifer.co.jp](mailto:info@eifer.co.jp)

[www.eifer.co.jp](http://www.eifer.co.jp)

## Melsec(R) ST1H series migration items

We are currently having a hard time getting information on "Melsec ST1H".

Because the information of "Melsec ST1H" is closed on the European site of Mitsubishi Electric. In other words, it may indicate the end of "Melsec ST1H".

We, Eifer Elektro Firma, provide migration items for easily replacing systems configured with "Melsec ST1H" with other models.

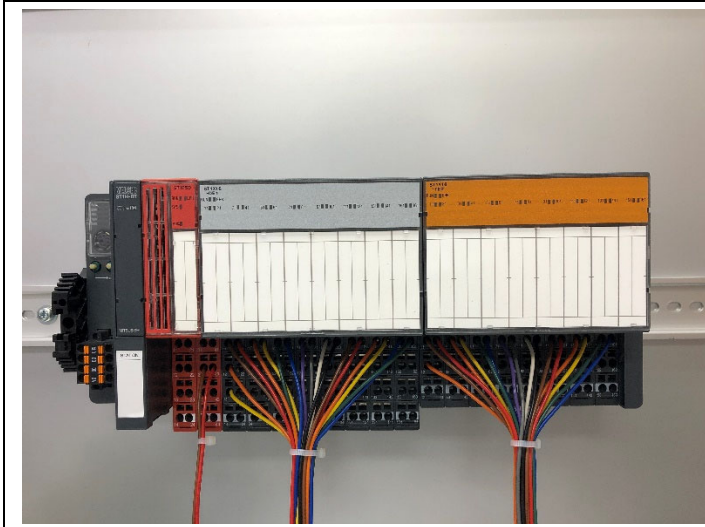
You can replace "Melsec ST1H" with your preferred system such as Simatic.

Manual for ST1H [https://www.eifer.co.jp/europe/melsec\\_st.html](https://www.eifer.co.jp/europe/melsec_st.html)

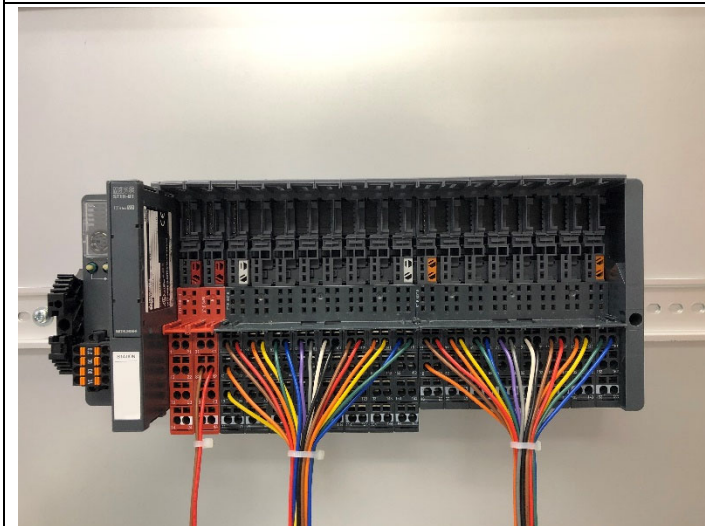


Eifer Elektro provides products for smart migration of Melsec ST1H to other models.

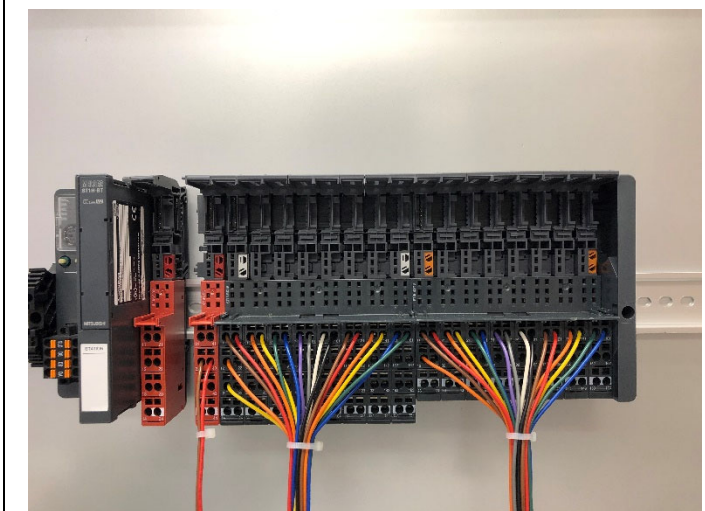




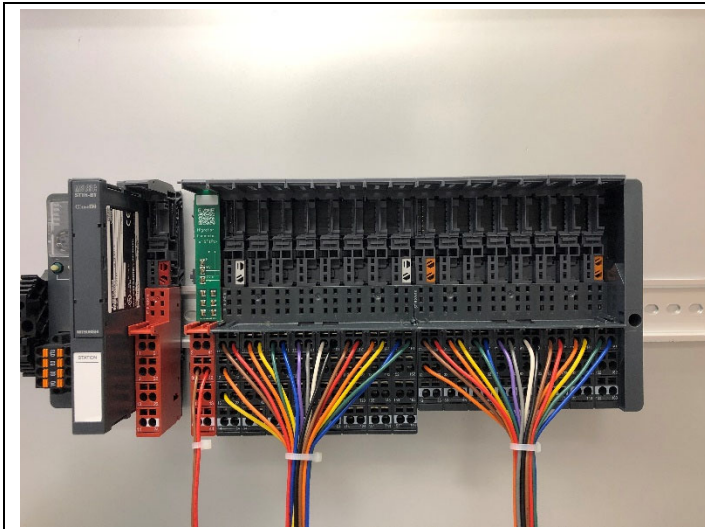
Existing Melsec ST1H system



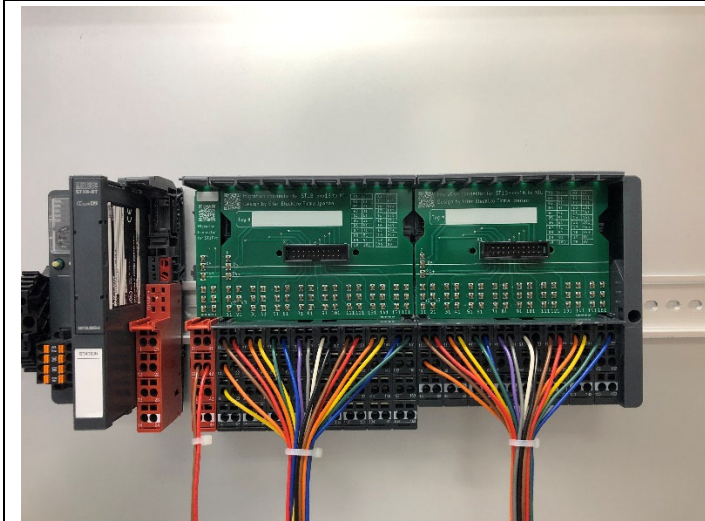
Remove Melsec ST1H  
modules



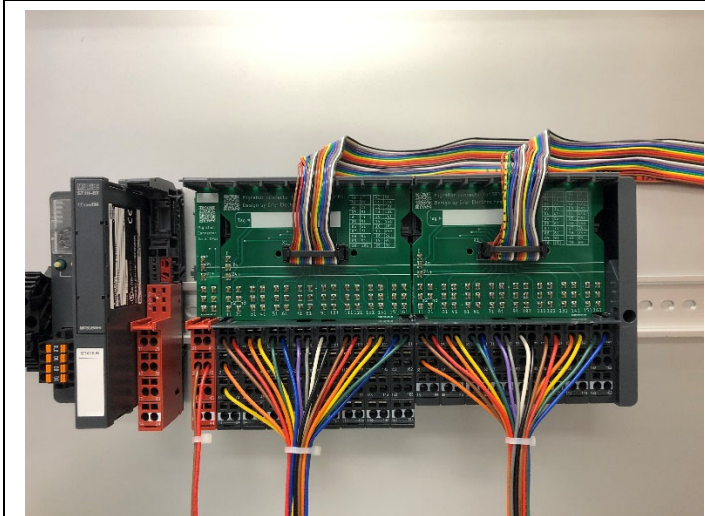
Separation IM (interface  
module)



insert  
Migration PCB for PM  
(Power Module)



insert  
Migration PCB  
for Melsec ST1H



Connect MIL Cable for New  
System



<https://youtu.be/lqInFS99hmY>

Please refer  
to the Youtube video.